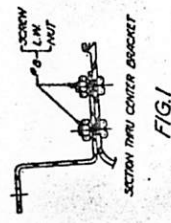
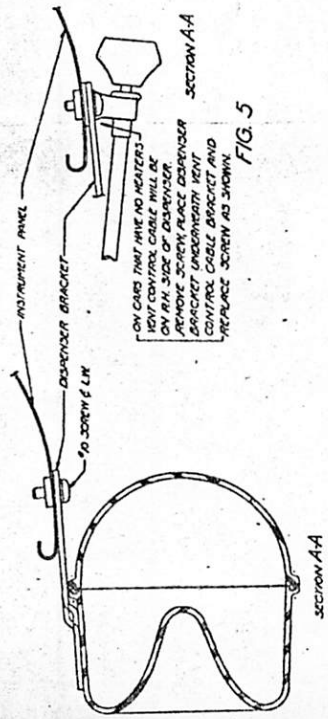


INS-9844A

Tissue Dispenser INSTRUCTIONS



- INSTALLATION INSTRUCTIONS**
- 1-PURCHASE DISPENSER COVER BY FILLING OUTWARD ON END OF SPRING CLIPS ON SIDES OF DISPENSER
 - 2-MOUNT CENTER SUPPORT BRACKET TO DISPENSER WITH TWO SCREWS, NUTS AND LOCKWASHERS FURNISHED IN PACKAGE, MAKING SURE NUT AND LOCKWASHERS ARE ON TOP OF BRACKET ON OUTSIDE OF DISPENSER (SEE FIG. 1)
 - 3-MOVE SCREW FROM L.H. SIDE OF HEAT CONTROL ROD AND MOUNT TISSUE DISPENSER BRACKET TO CENTER BRACKET (SEE FIGS. 4 & 5)
 - 4-IF HEAT CONTROL ROD HAS BEEN REMOVED USE SCREW FURNISHED AND MOUNT BRACKET IN SAME LOCATION AS PARAGRAPH 3 ABOVE. EXCEPT TISSUE DISPENSER BRACKET WILL FIT AGAINST INSTRUMENT PANEL (SEE FIG. 6)
 - 5-MOVE AND ALIGN DISPENSER SO THAT IT APPEARS IN POSITION AS SHOWN IN FIG. 3
 - 6-WITH LEFT HAND BRACKET, MOUNT TISSUE DISPENSER BRACKET TO LOWER FLANGE OF INSTRUMENT PANEL
 - 7-FURNISH LEFT HAND BRACKET WITH SCREW FINISHED
 - 8-WITH TISSUE DISPENSER MOUNTED BRACKET UNDERNEATH TO CENTER SUPPORT BRACKET OF TISSUE DISPENSER (SEE FIG. 4)
 - 9-USING HOLE IN CENTER SUPPORT BRACKET AS A GUIDE TAKE A SHARP OBJECT AND Pierce THROUGH CENTER SUPPORT BRACKET AND OF HEAT CONTROL ROD
 - 10-IF HEAT CONTROL ROD HAS BEEN REMOVED CENTER SUPPORT BRACKET MAKE SURE ANCHOR NUT IS ALIGNED WITH HOLE IN BRACKET (FIG. 4)
 - 11-OPEN GLOVE BOX DOOR AND TAKE SCREW AND FLAM WASHER FURNISHED AND PUT THROUGH HOLE THAT WAS PIERCED THROUGH CHASSIS BOARD OF GLOVE BOX
 - 12-AFTER MAKING SURE SCREW IS ALIGNED TO GO INTO ANCHOR NUT MOUNTED ON CENTER SUPPORT BRACKET, TIGHTEN SCREW AND TIGHTEN SCREW FROM INSIDE OF GLOVE BOX (FIG. 4)

