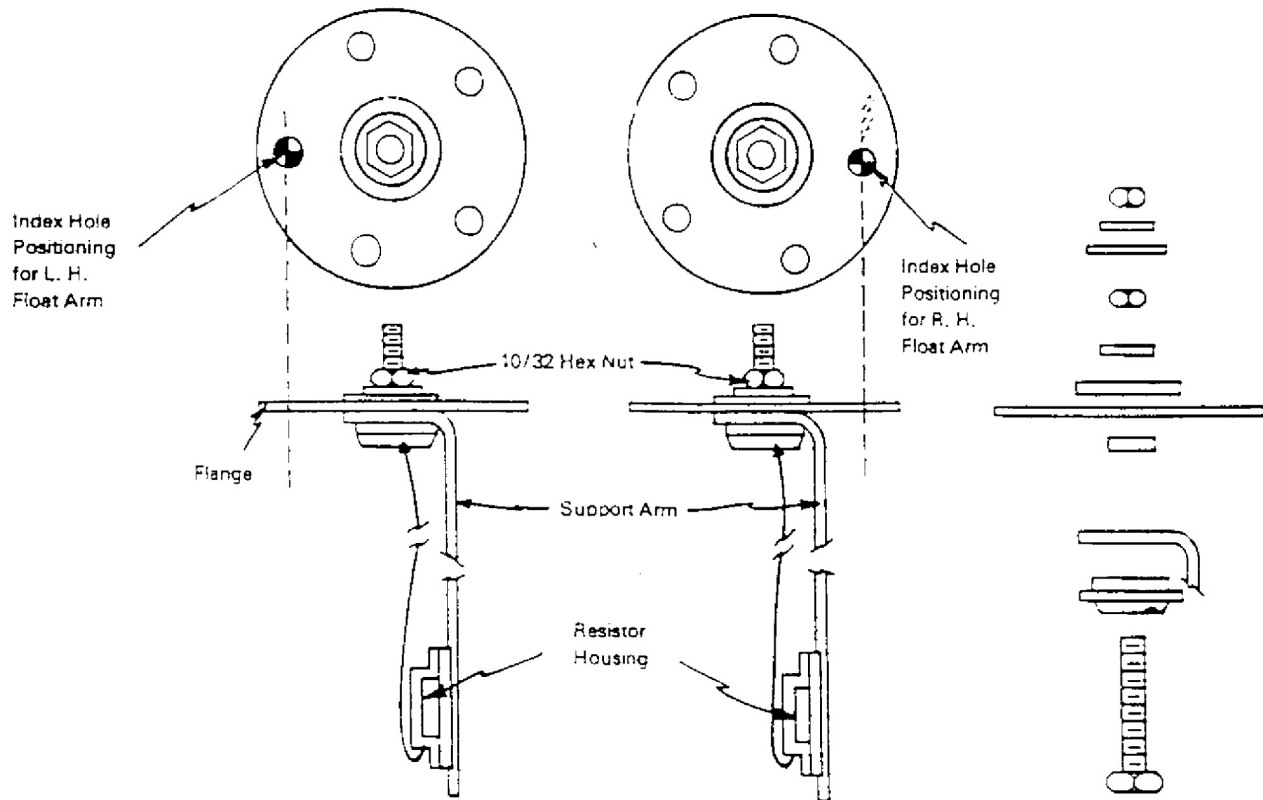


INSTALLATION INSTRUCTIONS FOR FUEL LEVEL SENDER

CAUTION
DISCONNECT BATTERY CABLE
BEFORE INSTALLING FUEL LEVEL SENDER

- Step 1.** Determine required float arm position. (Unless otherwise specified, senders are assembled for R. H. float arm position.) Position is determined by comparing the screw hole pattern on the tank to the pictures below.

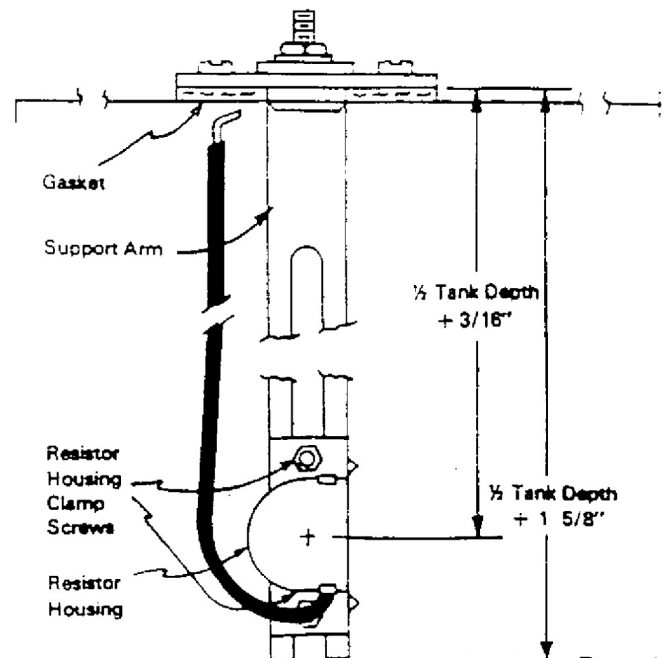


- Step 2.** If necessary to reposition float arm for L.H. positioning, loosen 10/32 hex nut and rotate index hole 180°. If hex nut is removed from stud, care must be taken that sealing hardware is correctly reassembled onto stud. See build-up of parts above. Do not tighten hex nut on stud until lead wire is installed - step 4.

- Step 3a.** Loosen resistor housing clamp screws and slide to this position which is $\frac{1}{2}$ tank depth + $\frac{3}{16}$ " (tank depth measured from bottom of the mounting flange). Tighten two screws in resistor housing.

- Step 3b.** Cut support arm to length. Recommended that $\frac{1}{2}$ tank depth + $1 \frac{5}{8}$ " be provided.

- Step 4.** Cut lead wire from housing to suitable length and strip end insulation from 1" wire. Thread stripped wire through slot in insulator and under stud. Maintain flange and support arm in firm contact while tightening hex nut on stud.

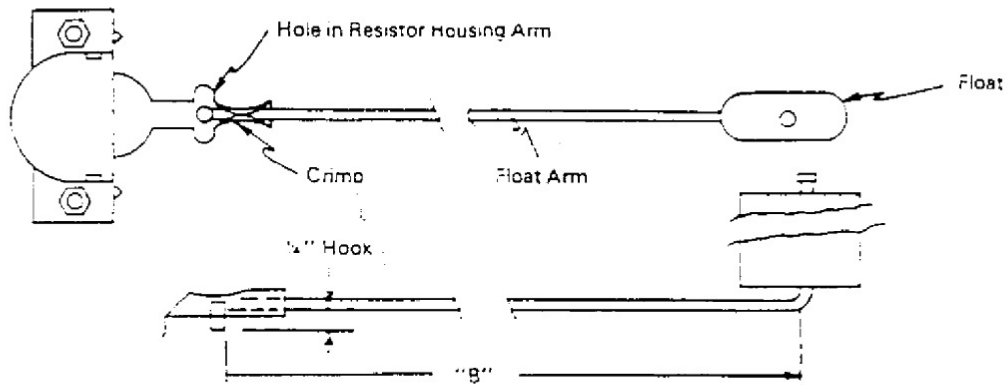


Step 5. Bend float arm to "B" dimension. Care should be taken in handling the float arm when the float has been installed. Any damage to the float will cause the sender to be in error. "B" dimensions for tank depths of 6" to 24" are as follows:

A	B	A	B	A	B	A	B
6	1 15/16	11	5 3/16	16	8 7/16	21	11 3/4
6 1/2	2 1/4	11 1/2	5 1/2	16 1/2	8 3/4	21 1/2	12 1/16
7	2 9/16	12	5 13/16	17	9 1/8	22	12 3/8
7 1/2	2 15/16	12 1/2	6 3/16	17 1/2	9 7/16	22 1/2	12 11/16
8	3 1/4	13	6 1/2	18	9 3/4	23	13
8 1/2	3 1/2	13 1/2	6 13/16	18 1/2	10 1/16	23 1/2	13 3/8
9	3 7/8	14	7 1/8	19	10 7/16	24	13 11/16
9 1/2	4 3/16	14 1/2	7 1/2	19 1/2	10 3/4		
10	4 1/2	15	7 13/16	20	11 1/16		
10 1/2	4 7/8	15 1/2	8 1/8	20 1/2	11 7/16		

A. Tank Depth B. Float Arm Bend Dimension

Cut off excess, leaving 1/4" hook on float arm when the float is flat in the horizontal position. Insert this hook into the hole provided in the resistor housing arm. Crimp resistor housing arm firmly around the float arm. Straighten float arm if necessary.



- Step 6.** Carefully position gasket under flange by moving gasket over float, float arm, support arm, and resistor housing.
- Step 7.** Install completed sender in tank by threading the sender, float end first, into tank mounting hole. Carefully align sender flange screw hole pattern with mounting screw hole pattern.
- Step 8.** Install all 5 mounting screws and tighten securely. Sender must be grounded to tank for proper operation. Ground through staple in gasket provided or through a wire connected between metal flange and metal chassis of the vehicle.